

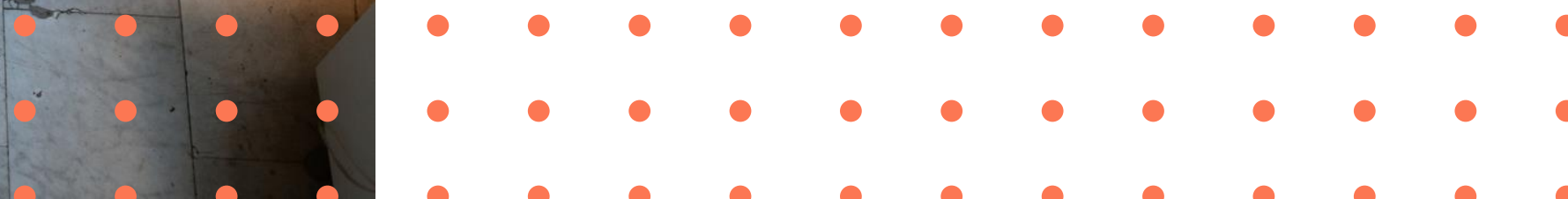
CHARTERED MANAGER STATUS

Presented by

O n i N c u b e

Introduction

- The **highest management level** determined by an effective qualification system
- Includes **official and informal education** (CMI provides on-the-job training to Managers)



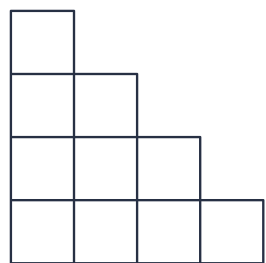
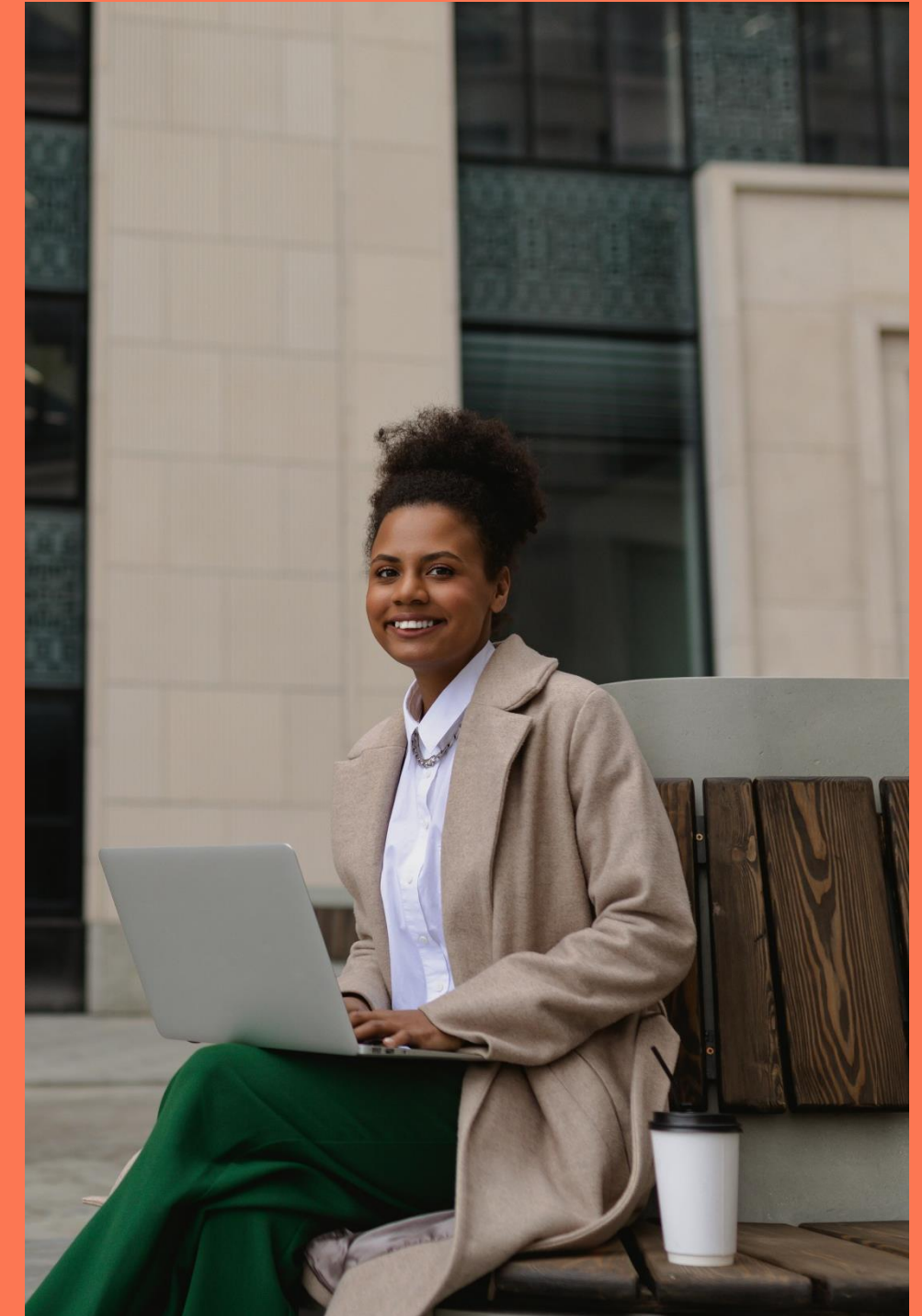
What is Chartered Manager Status?

- The **highest status** that can be achieved in the management profession
- Offers an **independent certification** of your **abilities to manage and lead**
- Exhibits **management** as well as **functional** abilities; reveals you have the transferable skills required to **further your career**
- Recognises Managers who have demonstrated **remarkable management and leadership** abilities, with a commitment to **CPD**



What do Chartered Managers do?

- Crucial in **delivering a company's long-term success** through strategic management & leadership strategies
- **Assess and improve the performance** of their teams, projects, and operations
- Identify and **make necessary modifications**
- They can be found in **high-level management positions** such as Head of Department, Senior Manager, Director, and Chief Executive

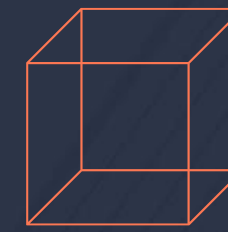




What is the value of a Chartered Manager?

- Management is the **largest profession** in the UK and will **continue to provide new employment opportunities**
- Managers earn skills via experience so it will likely **take longer** for Managers to acquire all required abilities
- Boosts your **professional reputation** and makes a stronger case to organisations when applying for management positions
- Gives you **skills and prestige** needed to meet requirements





Benefits for you

Individual-level	Organisation-level
<ul style="list-style-type: none"> • Valuable addition to an organisation • Improve abilities & professional reputation • Gain self-awareness (essential for effective management) • Boost self-assurance in demonstrating commitment to ethical management practices • Significant competitive edge, with your status indicating you have the necessary abilities and traits to lead successfully. 	<ul style="list-style-type: none"> • Follows a strict code of ethical leadership • Helps to develop other members of the organisation, creating new leaders • Strives to improve continuously • Can reduce staff turnover by exerting a positive impact on other members of the team



Advantages of having Chartered Manager Status

- Increasing monetary value (add **£391,443** to employer worth and **1 in every 5** associate the certification with higher income)
- Raising skill levels (**83%** have **become better Managers**)
- Capacity to lead (**92%** say their **self-awareness has increased**)
- Gaining professional recognition (**98%** became Chartered Managers to **acquire much-needed acknowledgement** of their status as a management professional)
- Inspiring employees (**more than 4 out of 5** Managers believe their status allows them to **serve as a role model**)



How to become a Chartered Manager



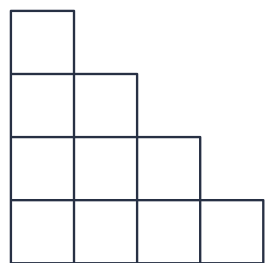
Route 1 – Full Assessment for Chartered Status

- **Requires:**
 - a bachelor's degree in management, business, or leadership and
 - 3 years' management experience
- No management specialist certification? You **require** 5 years of management experience (equivalent to Level 5 or operational/senior management level)
- Registration:
 - **Contact** the team (cmgr@managers.org.uk)
 - **Submit** a written application that summarises leadership & management experience with highlights
 - Attend an **interview** with an independent assessor
 - Assessor will **approve or decline** your application
- **Cost:** £650 plus VAT (plus ongoing annual membership fee where applicable)

How to become a Chartered Manager

Route 2 – Fast Track to Chartered Status

- After completing a CMI Diploma (at Level 5 or above) with at least 3 years' experience in a management role, **you can advance to Chartered Manager Status**
- Registration:
 - **Contact** the team (cmgr@managers.org.uk)
 - Get an **invoice**
- **Cost:** £130 plus VAT (plus membership fees where applicable)



How to become a Chartered Manager



Route 3 – Apprenticeship EPA & Chartered Status

- You must **complete End Point Assessment** through CMI for one of these apprenticeship standards and have relevant management experience
- **No registration** required with **no additional work or costs** for the apprentice
- You will be awarded Chartered Status:
 - If you're completing a CMI qualification alongside the apprenticeship & pass the apprenticeship
 - If you have CMI membership support as part of your EPA package & pass the apprenticeship
- If you're completing EPA only (no qualification, no membership support), when you pass your apprenticeship, you can complete a form to claim Chartered status.

**WE'D LIKE TO TAKE THIS OPPORTUNITY TO
OPEN THE FLOOR TO ANY QUESTIONS YOU
MIGHT HAVE BEFORE WE CLOSE OFF.**



THANK YOU

✓ Accredited courses

✓ Flexible Finance Options

✓ Full Career Support

✓ CMI Approved Centre

📍 10 Conqueror Court,
Vellum Drive, Sittingbourne,
Kent, ME10 5BB

🖱️ www.itonlinelearning.com

✉️ enquiries@itonlinelearning.com

🇿🇦 039 940 7802

🇮🇪 021 235 7770

🇬🇧 0800 160 1124

